

SAVE OSWEGATCHIE HILLS



The Oswegatchie Hills are a fragile coastal forest with a mile of pristine salt water frontage on the Niantic River. Development of this tidal estuary would destroy a critical part of the ecosystem that supports not only the River, but the Niantic Bay and Long Island Sound.

HABITAT and RECREATION

Tucked between I95 and the commercial and residential communities in East Lyme, CT, lies a secluded coastal forest. The rugged landscape of Oswegatchie Hills descends to a mile of salt water frontage on the Niantic River and provides a critical undisturbed habitat for a multitude of native plant and animal species, a safe haven for migrating birds and an inspiring landscape for the state's residents to hike and explore.



THREATENED

Two-thirds of the undeveloped coastal forest are protected in perpetuity by the Oswegatchie Hills Nature Preserve established in 2007. The final one-third has been threatened by high-density development for over 15 years.

The developer is seeking to construct 840 units of housing with 1,767 parking spaces on the 236-acre site in the first of two areas he has delineated for possible development. The second phase sits on the waterfront portion.



LAST MILE

The Oswegatchie Hills make up the last mile of undeveloped Niantic River saltwater shoreline. This last critical piece of land that abuts the existing 457-acre nature preserve includes vernal pools, wetlands, and steep hillsides with shallow depth-to-bedrock soils.

Development of this parcel would destroy a critical part of the ecosystem that supports not only the River, but the Niantic Bay and Long Island Sound.



SAVE OSWEGATCHIE HILLS

ONCE IT'S GONE, IT'S GONE FOREVER

Proposed Phase I:

- 840 high-density apartment units
- 1,767 parking spaces
- 36 acres of impervious surfaces

OSWEGATCHIE HILLS COALITION

The Save Oswegatchie Hills Coalition is made up of organizations and individuals from across the state. We believe the best use of the remaining 236 acres of this vulnerable coastal forest is preservation, not high density housing. The land should be acquired at fair market value and added to the adjoining Oswegatchie Hills Nature Preserve.

Founding Members

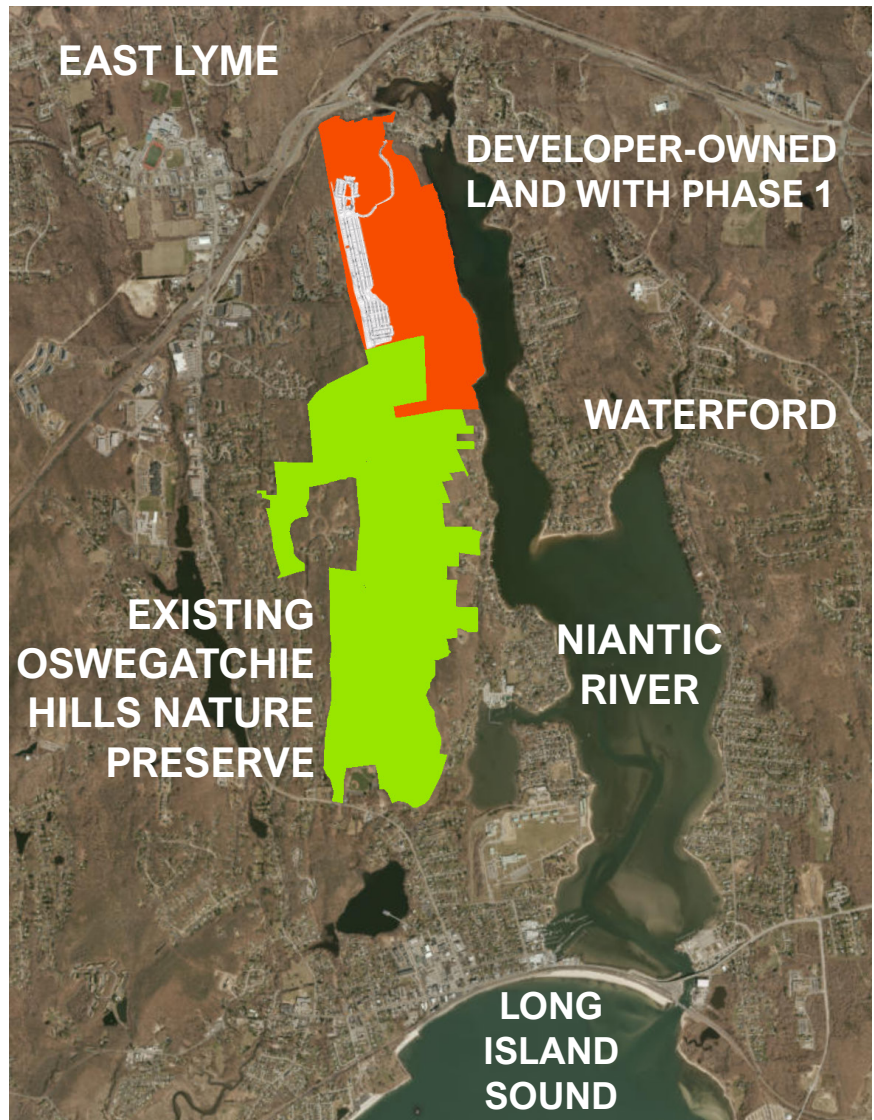
CT Fund for the Environment/Save the Sound
Friends of Oswegatchie Hills Nature Preserve
Save the River-Save the Hills

Statewide Organizations

CT Land Conservation Council
CT Forest and Park Association
Rivers Alliance of Connecticut
CT Chapter of the Sierra Club

Our Neighbors

Hamden Land Conservation Trust
CT Citizens Against Overdevelopment
Eightmile River Wild & Scenic Committee
Old Lyme Land Trust
Old Saybrook Land Trust
Middlesex Land Trust
Groton Open Space Association
Tributary Mill Conservancy
Lyme Land Conservation Trust
Denison Pequotsepos Nature Center



Organizations in the Niantic River Watershed

East Lyme Harbor Management/Shellfish Commission
East Lyme Land Trust
East Lyme Historical Society
East Lyme Historical Properties
Samuel Smith Farmstead
East Lyme Garden Club
Children's Museum of Southeastern Connecticut
Waterford Land Trust
Friends of Smith-Harris House
Waterford Historical Properties Commission

JOIN THE SAVE OSWEGATCHIE HILLS COALITION TODAY!

**TO JOIN and for
MORE INFO**

Suzanne Thompson
sthompson@ctenvironment.org
860-662-1531

www.oswhills.org
www.savetheriversavethehills.org
www.ctenvironment.org/oswegatchie