

# SAVE OSWEGATCHIE HILLS



The Oswegatchie Hills are a fragile coastal forest with a mile of pristine salt water frontage on the Niantic River. Development of this tidal estuary would destroy a critical part of the ecosystem that supports not only the River, but the Niantic Bay and Long Island Sound.

## HABITAT and RECREATION

Tucked between I-95 and the commercial and residential communities in East Lyme, CT, lies a secluded, fragile coastal forest. The rugged landscape of Oswegatchie Hills descends to a mile of salt water frontage on the Niantic River and provides a critical undisturbed habitat for a multitude of native plant and animal species, a safe haven for migrating birds and an inspiring landscape for the state's residents to hike and explore.



## THREATENED

Two-thirds of the undeveloped coastal forest is protected in perpetuity by the Oswegatchie Hills Nature Preserve established in 2007. The final one-third has been threatened by high-density development for over 15 years.

The developer is seeking to construct 840 units of housing with 1,767 parking spaces on the 236-acre site in the first of two areas he has delineated for possible development. The second phase sits on the waterfront portion.

## LAST MILE

The Oswegatchie Hills make up the last mile of undeveloped Niantic River saltwater shoreline. This last critical piece of land that abuts the existing 457-acre nature preserve includes vernal pools, wetlands, and steep hillsides with shallow depth-to-bedrock soils.

*Our goal is to see this land protected and preserved for future generations.*





# SAVE OSWEGATCHIE HILLS

## ONCE IT'S GONE, IT'S GONE FOREVER

### Proposed Phase I:

- 840 high-density apartment units
- 1,767 parking spaces
- 36 acres of impervious surfaces

### JOIN OUR COALITION

The Save Oswegatchie Hills Coalition includes organizations and individuals from across the state. We believe the best use of the remaining 236 acres of this vulnerable coastal forest is preservation, not high density development.

**This land should be acquired at fair market value and added to the adjoining Oswegatchie Hills Nature Preserve.**

### Founding Members

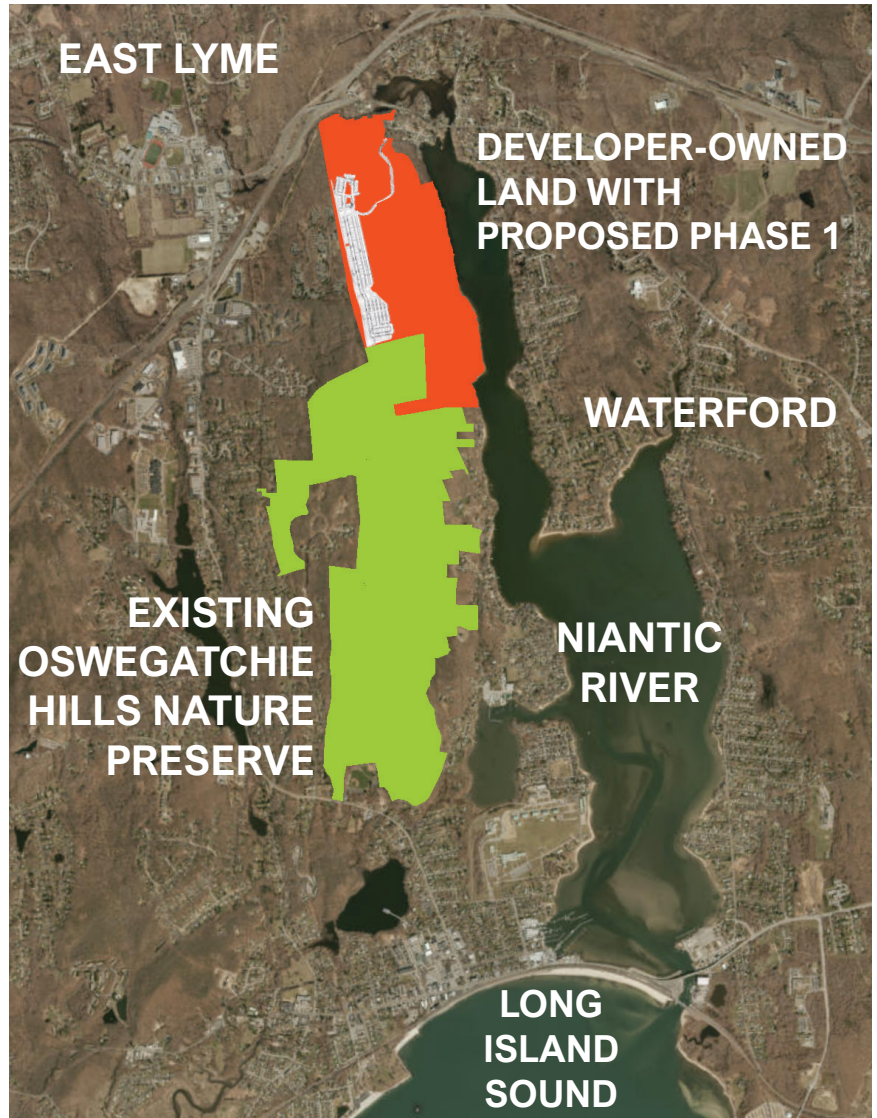
CT Fund for the Environment/Save the Sound  
Friends of Oswegatchie Hills Nature Preserve  
Save the River-Save the Hills

### Statewide Organizations

CT Land Conservation Council  
CT Forest and Park Association  
Rivers Alliance of Connecticut  
CT Chapter of the Sierra Club

### Our Neighbors

Hamden Land Conservation Trust  
CT Citizens Against Overdevelopment  
Eightmile River Wild & Scenic Committee  
Old Lyme Land Trust  
Old Saybrook Land Trust  
Middlesex Land Trust  
Groton Open Space Association  
Tributary Mill Conservancy  
Lyme Land Conservation Trust  
Denison Pequotsepos Nature Center  
Potapaug Audubon Society  
Friends of Pachaug Forest



### Organizations in the Niantic River Watershed

East Lyme Harbor Management/Shellfish Commission  
East Lyme Land Trust  
East Lyme Historical Society  
East Lyme Historical Properties  
Samuel Smith Farmstead  
Pollinator Pathway East Lyme  
Children's Museum of Southeastern Connecticut  
Waterford Land Trust  
Brookside Farm Museum  
Waterford Historical Properties Commission

**JOIN THE SAVE OSWEGATCHIE HILLS COALITION TODAY!**

**TO JOIN and for  
MORE INFO**

**Suzanne Thompson**  
[sthompson@ctenvironment.org](mailto:sthompson@ctenvironment.org)  
860-662-1531

[www.oswhills.org](http://www.oswhills.org)  
[www.savetheriversavethehills.org](http://www.savetheriversavethehills.org)  
[www.savethesound.org/oswegatchie](http://www.savethesound.org/oswegatchie)