

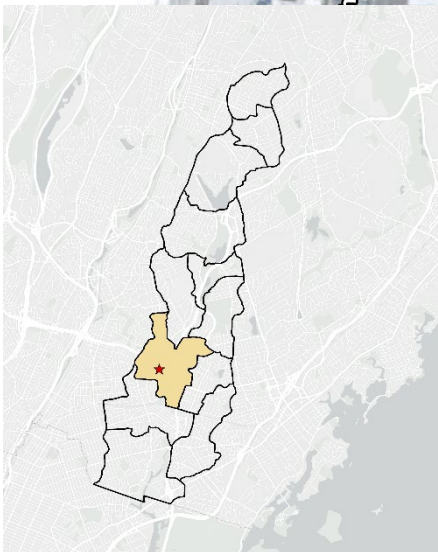
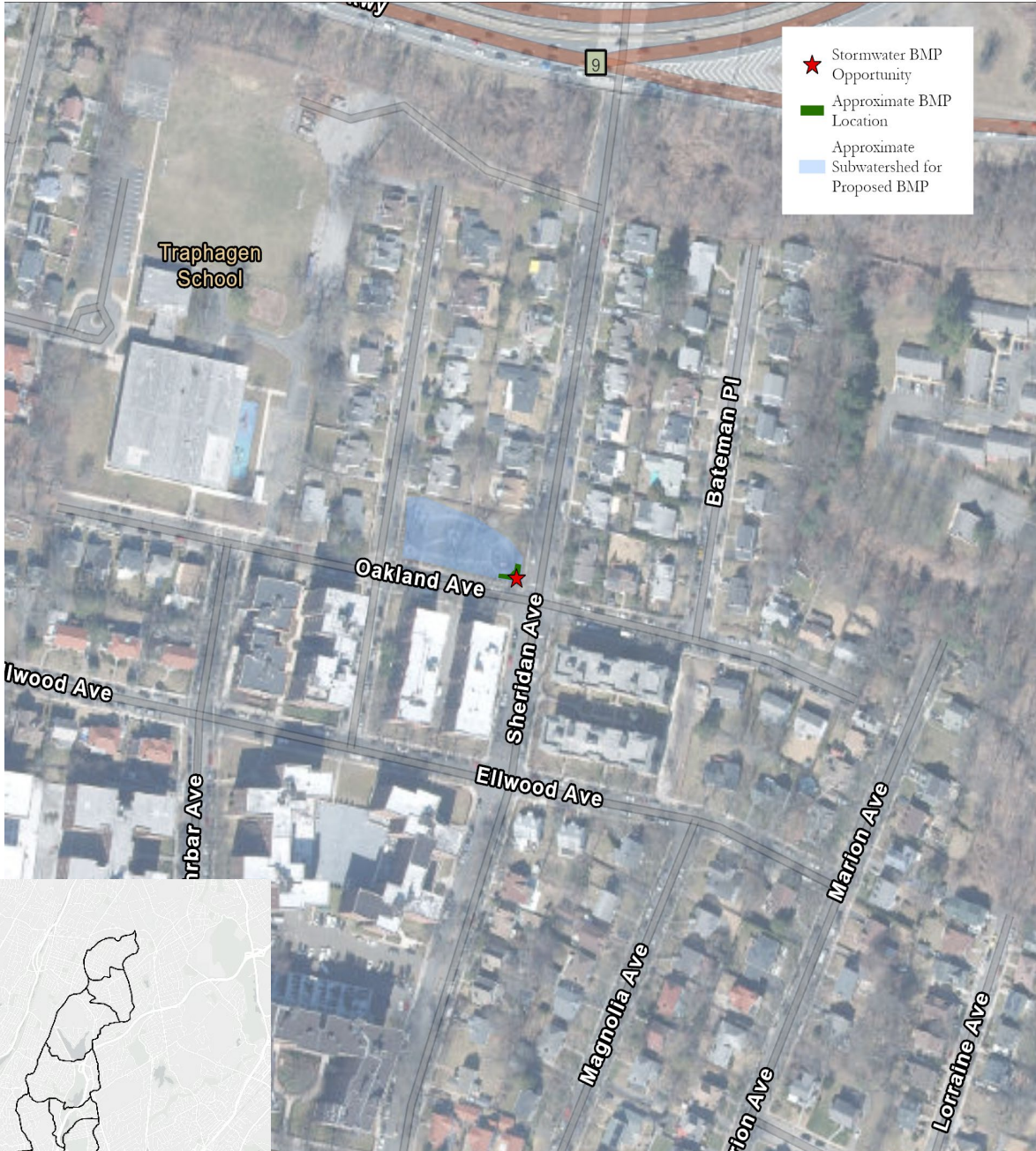
Appendix F: Summary Sheets for High Priority Restoration Opportunities

HUTCHINSON RIVER WATERSHED MANAGEMENT PLAN

Stormwater Management Opportunity: Sheridan Ave Park

ID: RtFt_25

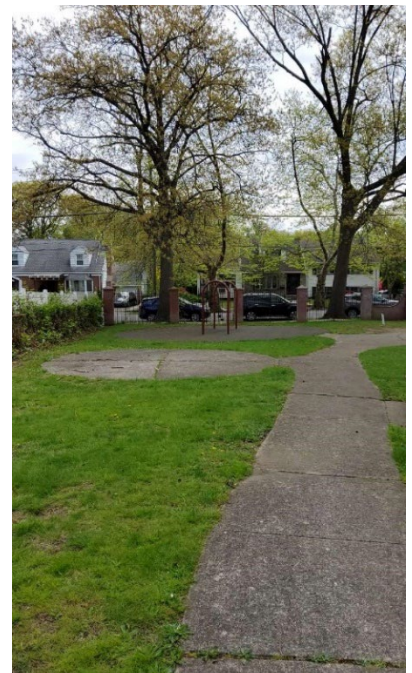
Subwatershed: Pelham Lake



Stormwater Management Opportunity Project Description
 October 2023

Latitude, Longitude	40.9201, -73.8186
BMP Intervention Type	Bioretention
Ownership	Public
Existing Land Use	Mixed Pavement and Open Space
Existing Drainage System	Overland
Observed Flooding	Nuisance Flooding
Subwatershed Water Treatment	Partial Treatment Likely (approx. 3.01% of delineated area)
Additional Opportunities on this Site	Yes
Project Visibility	High: large park and playground
Challenges for Implementation	Constrained by: Utilities, Property Boundary
Approximate Cost	Low

Environmental Score	Ability to Address Score	Ancillary Benefits Score	Total Score
15	17	12	44

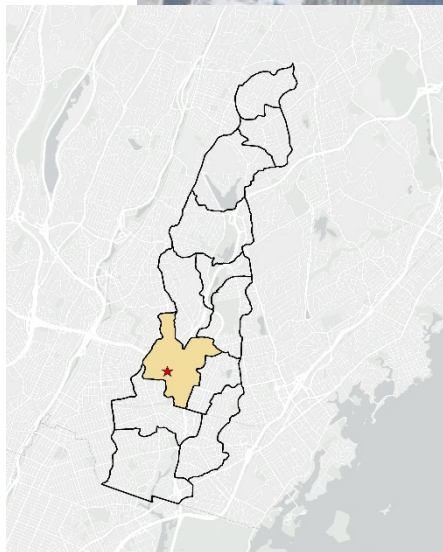


HUTCHINSON RIVER WATERSHED MANAGEMENT PLAN

Stormwater Management Opportunity: Sheridan Ave Street Median

ID: RtFt_26

Subwatershed: Pelham Lake



Stormwater Management Opportunity Project Description
 October 2023

Latitude, Longitude	40.9197, -73.8186
BMP Intervention Type	Bioretention
Ownership	Public
Existing Land Use	Street
Existing Drainage System	Overland and Piped
Observed Flooding	Nuisance Flooding
Subwatershed Water Treatment	Full Treatment Likely (approx. 8.53% of delineated area)
Additional Opportunities on this Site	Yes
Project Visibility	High: on a highly populated, public street
Challenges for Implementation	Constrained by: Proximity to Roads, Utilities
Approximate Cost	Low

Environmental Score	Ability to Address Score	Ancillary Benefits Score	Total Score
22	17	7	46

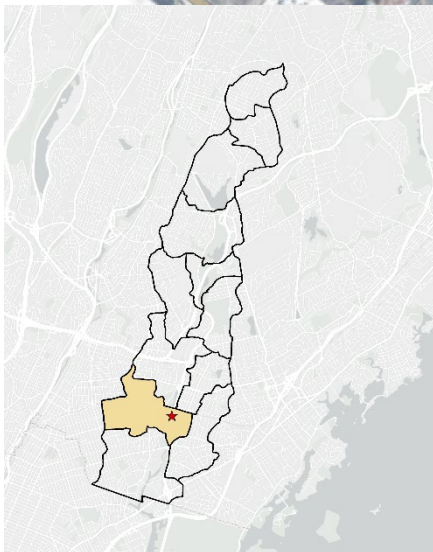


HUTCHINSON RIVER WATERSHED MANAGEMENT PLAN

Stormwater Management Opportunity: Beechwood Ave

ID: RtFt_47

Subwatershed: Vernon Park



Stormwater Management Opportunity Project Description
 October 2023

Latitude, Longitude	40.9094, -73.8146
BMP Intervention Type	Bioretention
Ownership	Public
Existing Land Use	Open Space
Existing Drainage System	Piped
Observed Flooding	Nuisance Flooding
Subwatershed Water Treatment	Partial Treatment Likely (approx. 1.22% of delineated area)
Additional Opportunities on this Site	Yes
Project Visibility	Low: on a residential street
Challenges for Implementation	Constrained by: Proximity to Roads, Utilities, Property Boundary
Approximate Cost	Medium

Environmental Score	Ability to Address Score	Ancillary Benefits Score	Total Score
15	17	12	44

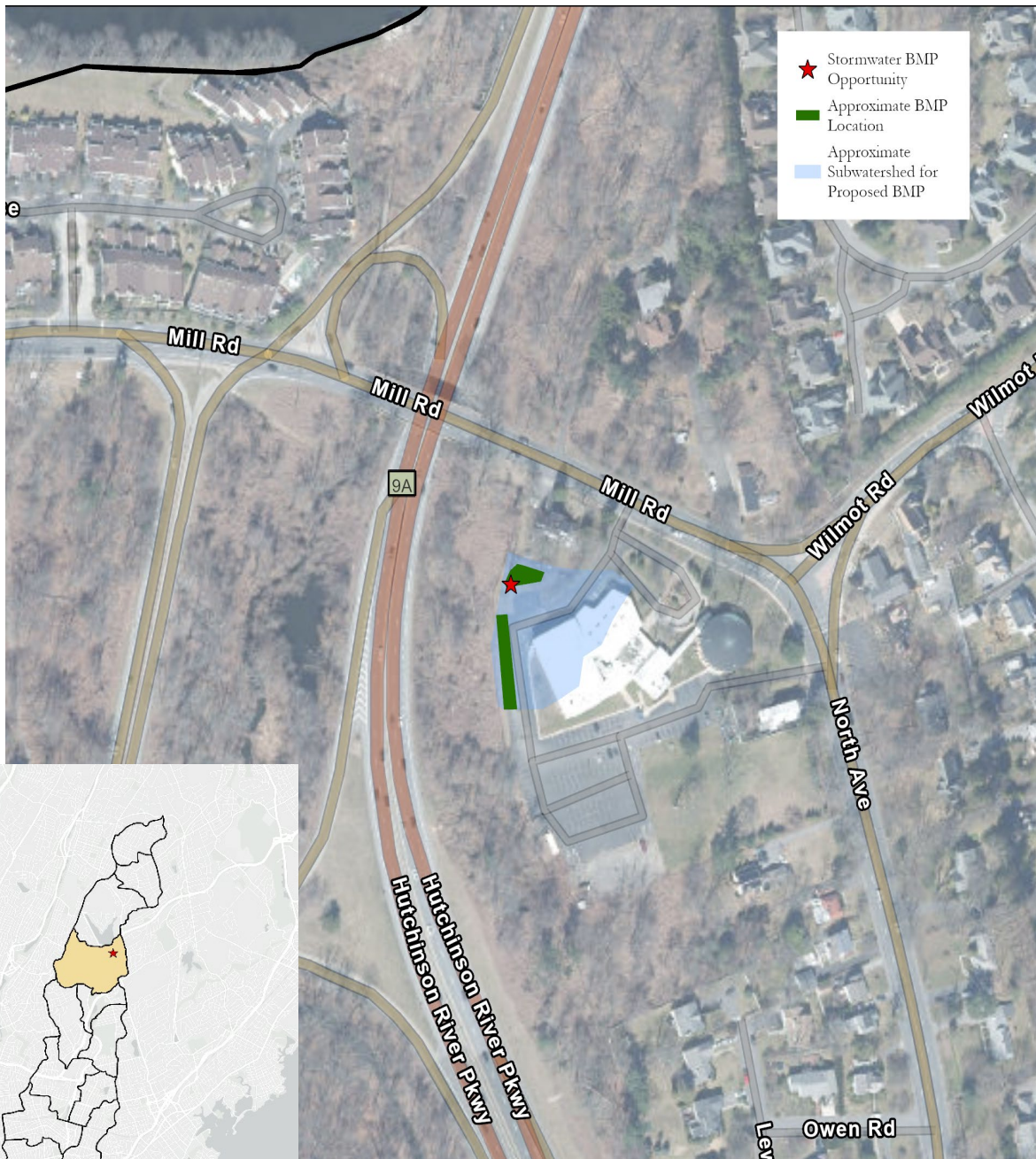


HUTCHINSON RIVER WATERSHED MANAGEMENT PLAN

Stormwater Management Opportunity: Holy Trinity Greek Orthodox Church Side Lawn

ID: RtFt_06

Subwatershed: Reservoir Three



Stormwater Management Opportunity Project Description
 October 2023

Latitude, Longitude	40.9545, -73.7986
BMP Intervention Type	Wetland
Ownership	Institutional
Existing Land Use	Mixed Pavement and Open Space
Existing Drainage System	Overland and Piped
Observed Flooding	Nuisance Flooding
Subwatershed Water Treatment	Potential for Extra Treatment (approx. 11.98% of delineated area)
Additional Opportunities on this Site	Yes
Project Visibility	Low: corner of church parking lot but more a roadway
Challenges for Implementation	Constrained by: Steep Slopes
Approximate Cost	High

Environmental Score	Ability to Address Score	Ancillary Benefits Score	Total Score
30	10	5	45



Stormwater Management Opportunity Project Description

October 2023

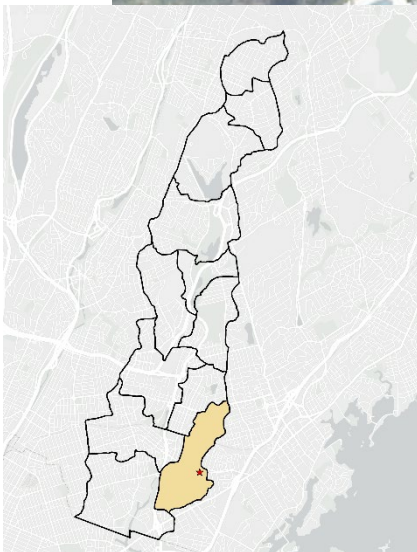


HUTCHINSON RIVER WATERSHED MANAGEMENT PLAN

Stormwater Management Opportunity: Colonial Ave Shoulder

ID: RtFt_28

Subwatershed: Secor Lane



Stormwater Management Opportunity Project Description
 October 2023

Latitude, Longitude	40.9026, -73.8050
BMP Intervention Type	Bioretention
Ownership	Public
Existing Land Use	Street
Existing Drainage System	Overland
Observed Flooding	Nuisance Flooding
Subwatershed Water Treatment	Full Treatment Likely (approx. 8.16% of delineated area)
Additional Opportunities on this Site	Yes
Project Visibility	Medium: along a road with no sidewalk
Challenges for Implementation	Constrained by: Proximity to Roads, Utilities, Property Boundary
Approximate Cost	Medium

Environmental Score	Ability to Address Score	Ancillary Benefits Score	Total Score
22	17	5	44



HUTCHINSON RIVER WATERSHED MANAGEMENT PLAN

Stormwater Management Opportunity: Presbyterian Church and Holmes School Shared Lot

ID: RtFt_21

Subwatershed: Pelham Lake



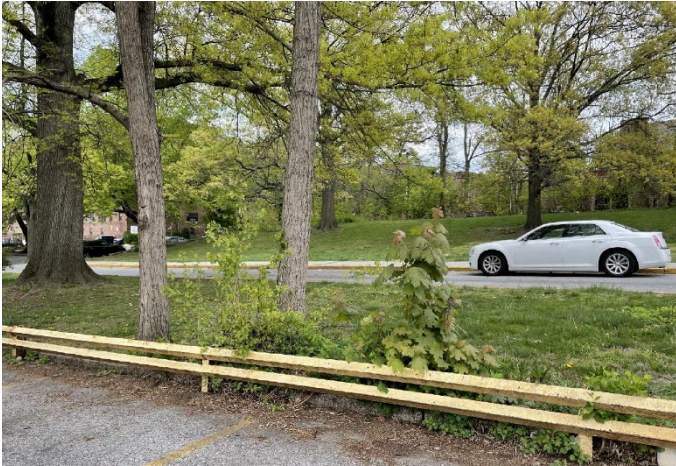
Stormwater Management Opportunity Project Description
 October 2023

Latitude, Longitude	40.9178, -73.8244
BMP Intervention Type	Bioretention
Ownership	Public
Existing Land Use	Pavement
Existing Drainage System	Overland
Observed Flooding	Nuisance Flooding
Subwatershed Water Treatment	Potential for Extra Treatment (approx. 23.34% of delineated area)
Additional Opportunities on this Site	Yes
Project Visibility	High: between church and public school
Challenges for Implementation	Constrained by: Property Boundary, Vertical Storage
Approximate Cost	High

Environmental Score	Ability to Address Score	Ancillary Benefits Score	Total Score
25	12	12	49

Stormwater Management Opportunity Project Description

October 2023

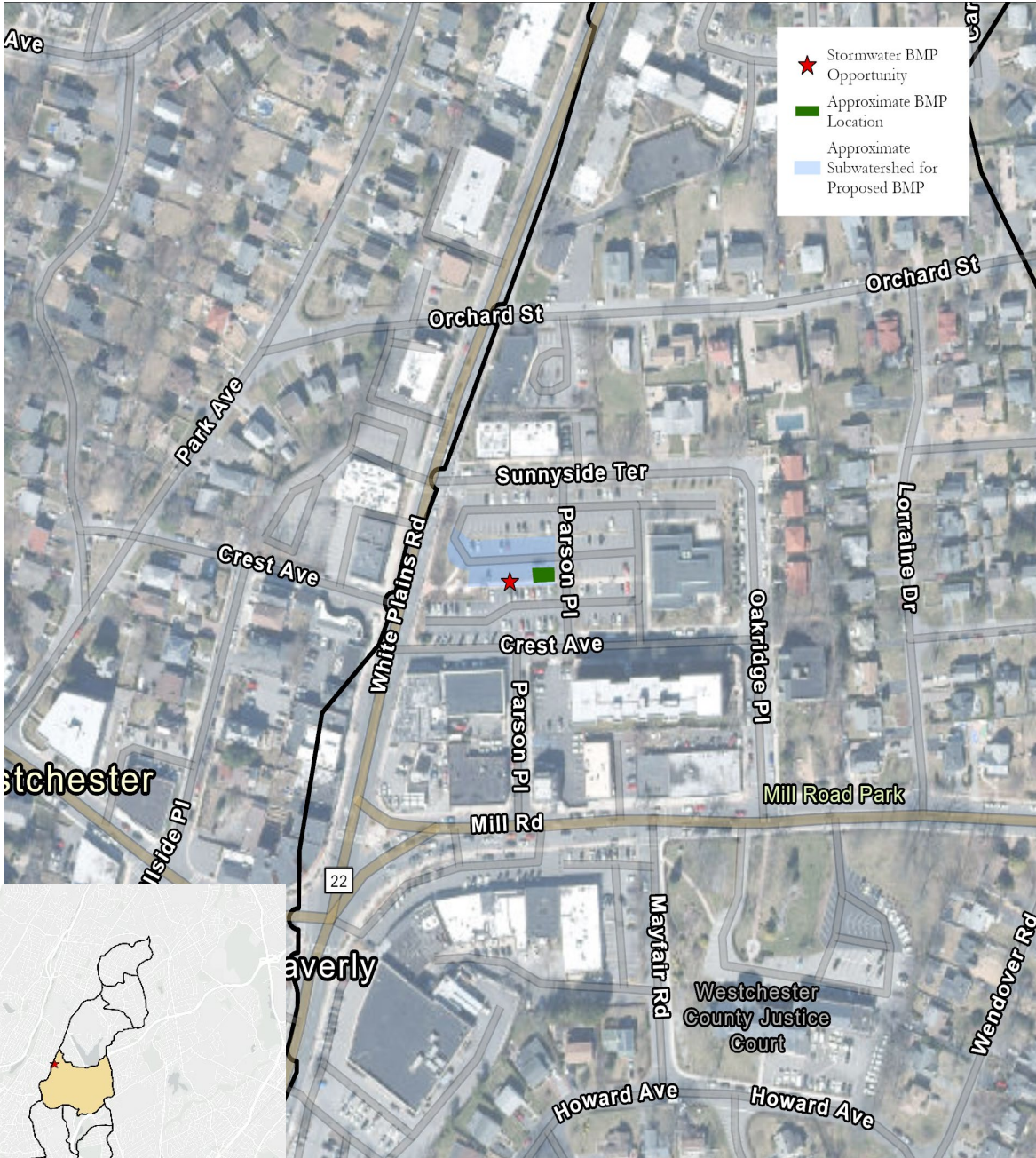


HUTCHINSON RIVER WATERSHED MANAGEMENT PLAN

Stormwater Management Opportunity: Eastchester Public Library

ID: RtFt_04

Subwatershed: Reservoir Three



Stormwater Management Opportunity Project Description
 October 2023

Latitude, Longitude	40.9572, -73.8128
BMP Intervention Type	Bioretention
Ownership	Public
Existing Land Use	Parking Lot
Existing Drainage System	Overland
Observed Flooding	Nuisance Flooding
Subwatershed Water Treatment	Full Treatment Likely (approx. 6.62% of delineated area)
Additional Opportunities on this Site	Yes
Project Visibility	High: in front of a library
Challenges for Implementation	Constrained by: Utilities, Natural Resources
Approximate Cost	Low

Environmental Score	Ability to Address Score	Ancillary Benefits Score	Total Score
22	17	7	46

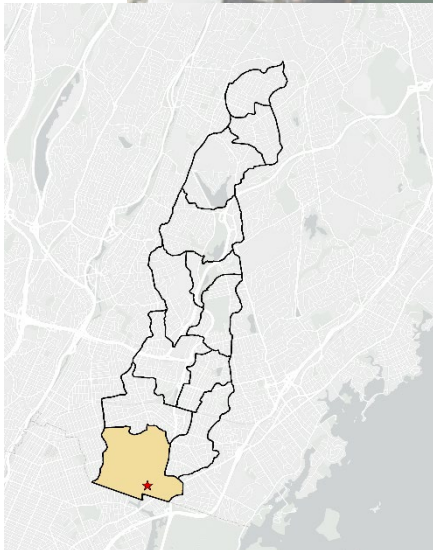
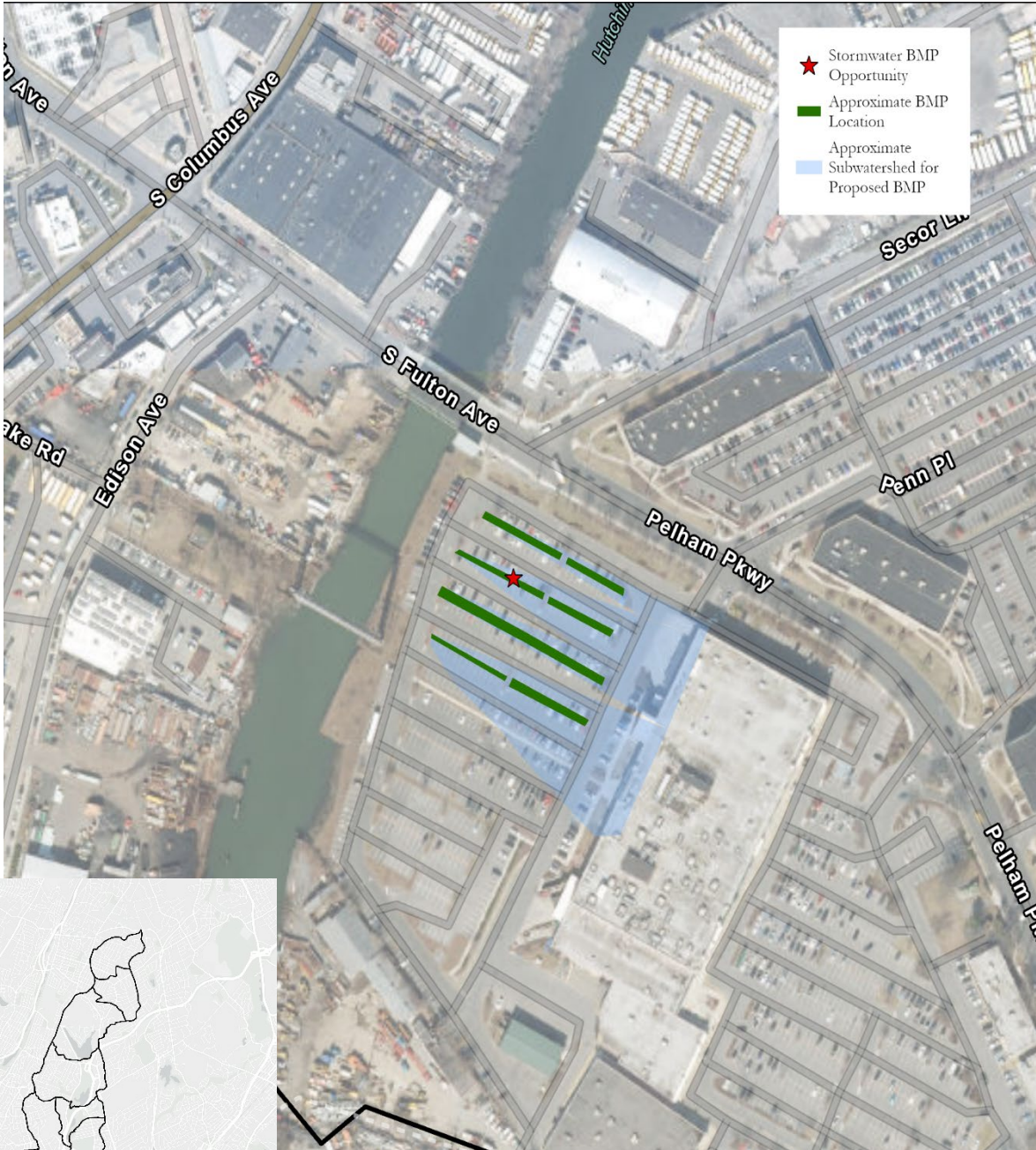


HUTCHINSON RIVER WATERSHED MANAGEMENT PLAN

Stormwater Management Opportunity: Dave and Busters Parking Lot

ID: RtFt_11

Subwatershed: Sprague Terminal Canal



Stormwater Management Opportunity Project Description
 October 2023

Latitude, Longitude	40.8931, -73.8217
BMP Intervention Type	Bioretention
Ownership	Private
Existing Land Use	Mixed Pavement and Open Space
Existing Drainage System	Overland and Piped
Observed Flooding	Major Flooding
Subwatershed Water Treatment	Potential for Extra Treatment (approx. 16.52% of delineated area)
Additional Opportunities on this Site	Yes
Project Visibility	Medium: in a large, temporarily used parking lot
Challenges for Implementation	Constrained by: Utilities, Natural Resources, Vertical Storage
Approximate Cost	High

Environmental Score	Ability to Address Score	Ancillary Benefits Score	Total Score
35	5	12	52

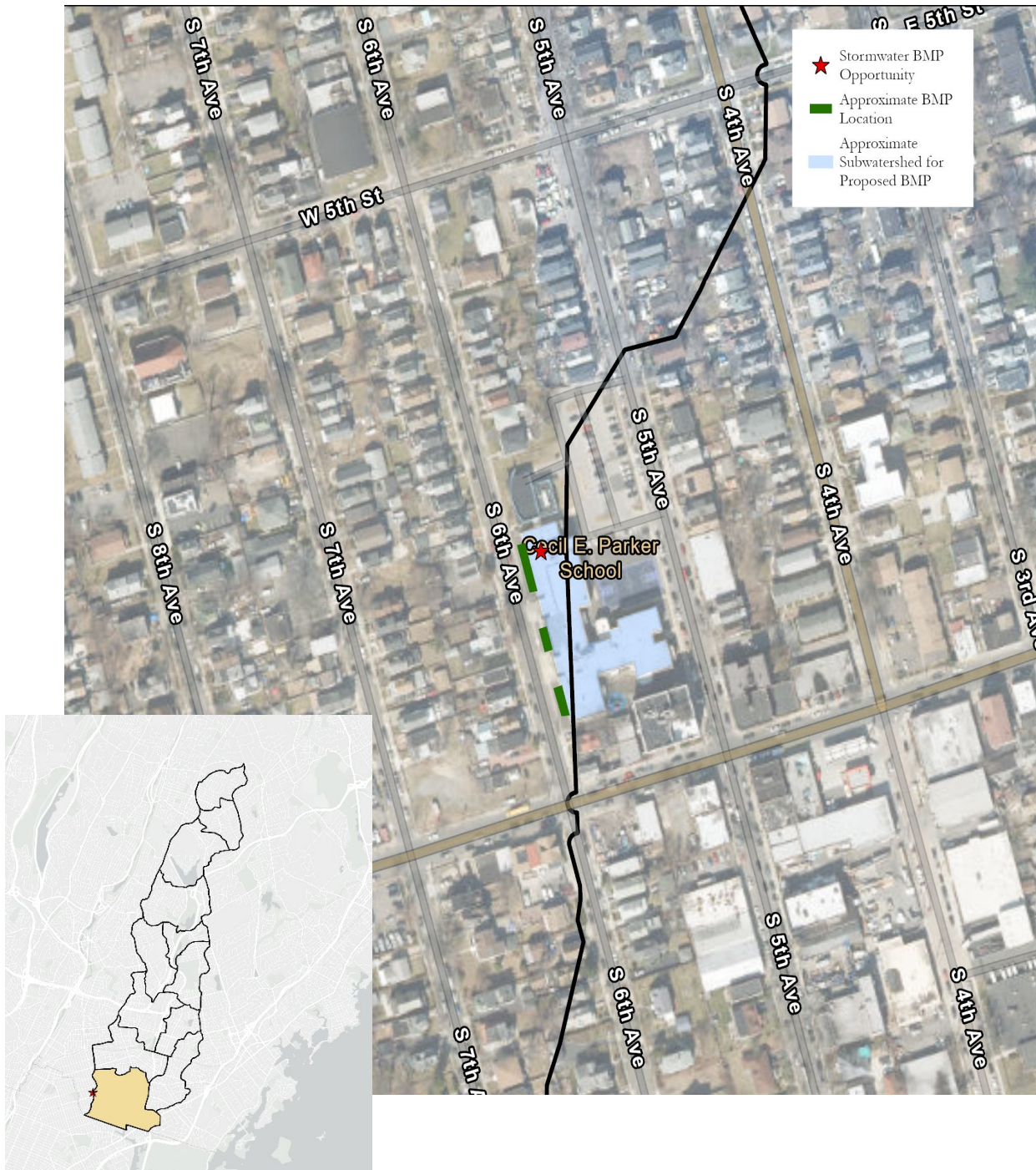


HUTCHINSON RIVER WATERSHED MANAGEMENT PLAN

Stormwater Management Opportunity: Cecil E Parker Elementary School

ID: RtFt_19

Subwatershed: Sprague Terminal Canal



Stormwater Management Opportunity Project Description
 October 2023

Latitude, Longitude	40.9001, -73.8345
BMP Intervention Type	Bioretention
Ownership	Public
Existing Land Use	Pavement
Existing Drainage System	Overland
Observed Flooding	Nuisance Flooding
Subwatershed Water Treatment	Full Treatment Likely (approx. 7.84% of delineated area)
Additional Opportunities on this Site	Yes
Project Visibility	High: in front of elementary school
Challenges for Implementation	Constrained by: Property Boundary
Approximate Cost	Medium

Environmental Score	Ability to Address Score	Ancillary Benefits Score	Total Score
22	17	7	46

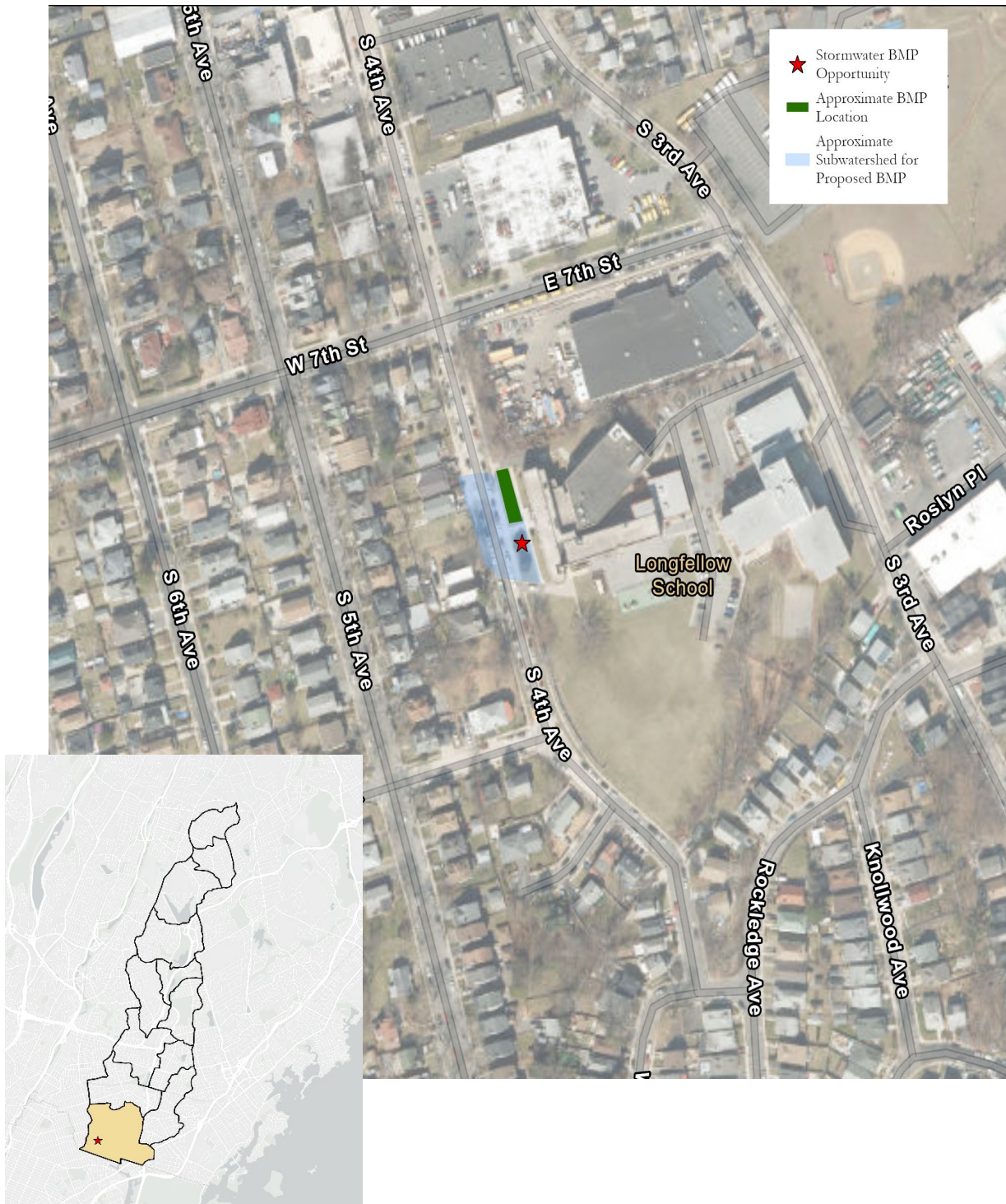


HUTCHINSON RIVER WATERSHED MANAGEMENT PLAN

Stormwater Management Opportunity: Rebecca Turner Elementary School

ID: RtFt_27

Subwatershed: Sprague Terminal Canal



Stormwater Management Opportunity Project Description
 October 2023

Latitude, Longitude	40.8963, -73.8311
BMP Intervention Type	Bioretention
Ownership	Public
Existing Land Use	Mixed Pavement and Open Space
Existing Drainage System	Overland
Observed Flooding	Nuisance Flooding
Subwatershed Water Treatment	Potential for Extra Treatment (approx. 12.73% of delineated area)
Additional Opportunities on this Site	Yes
Project Visibility	High: in front of a school
Challenges for Implementation	Constrained by: Natural Resources, Property Boundary
Approximate Cost	Medium

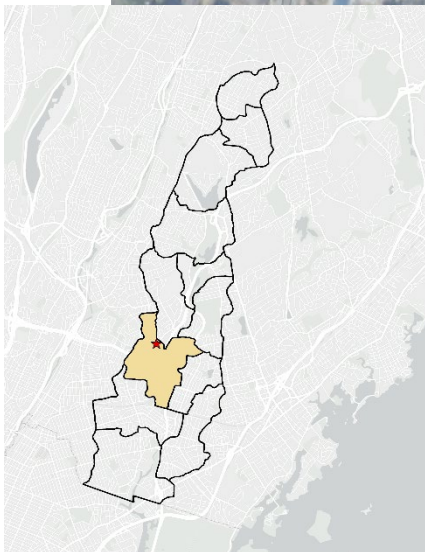
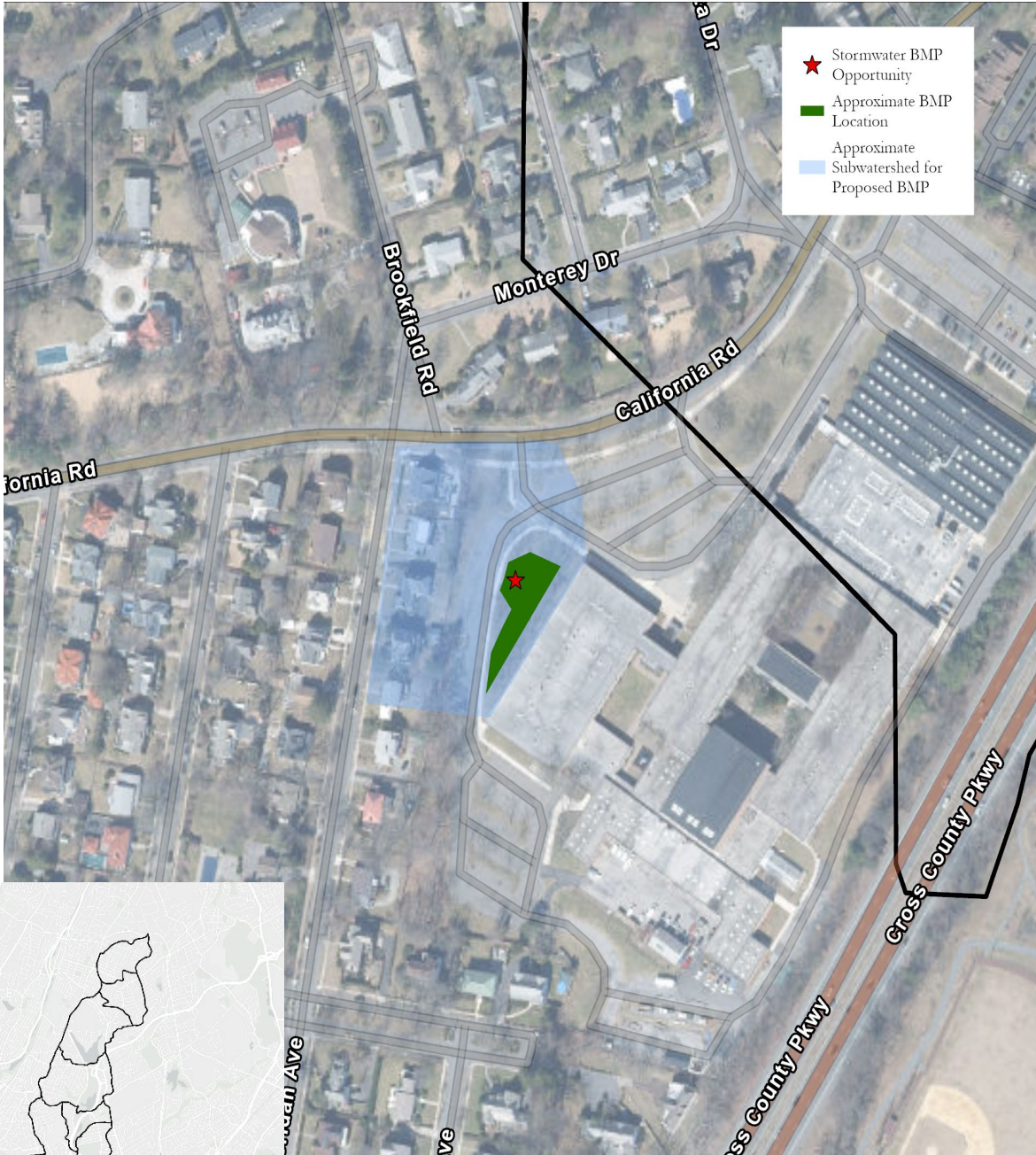
Environmental Score	Ability to Address Score	Ancillary Benefits Score	Total Score
25	15	7	47

HUTCHINSON RIVER WATERSHED MANAGEMENT PLAN

Stormwater Management Opportunity: Mt Vernon High School

ID: RtFt_24

Subwatershed: Pelham Lake



Stormwater Management Opportunity Project Description
 October 2023

Latitude, Longitude	40.9260, -73.8164
BMP Intervention Type	Wetland
Ownership	Public
Existing Land Use	Open Space
Existing Drainage System	Overland and Piped
Observed Flooding	Major Flooding
Subwatershed Water Treatment	Potential for Extra Treatment (approx. 7.75% of delineated area)
Additional Opportunities on this Site	Yes
Project Visibility	High: Outside a large high school
Challenges for Implementation	Constrained by: Utilities, Access
Approximate Cost	High

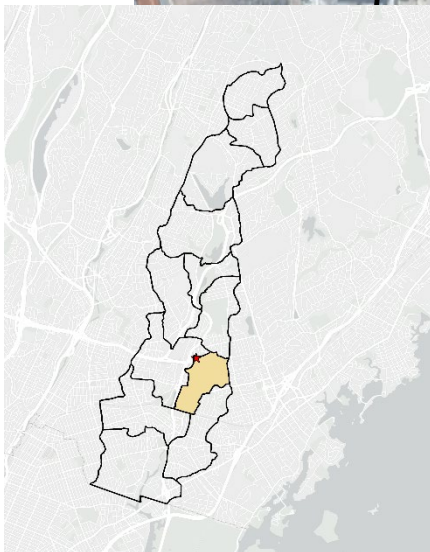
Environmental Score	Ability to Address Score	Ancillary Benefits Score	Total Score
40	14	12	66

HUTCHINSON RIVER WATERSHED MANAGEMENT PLAN

Reforestation Opportunity: Chester Park

ID: ReFst_30

Subwatershed: Wolfs Lane Park



Reforestation Opportunity Project Description
 October 2023

Latitude, Longitude	40.9226, -73.8071
Reforestation Type	Conservation Landscaping
Ownership	Public
Existing Land Use	Open Space
Existing Vegetation	Grass Lawn and Shade Trees
Low-Lying Areas	None
Approximate Size of Reforestation Effort	Medium: 0.33 Acres
Invasive Presence and Species Type	Low
Additional Opportunities on this Site	Yes
Project Visibility	High: in a residential park
Challenges for Implementation	Medium: Potential utilities
Approximate Cost	Medium

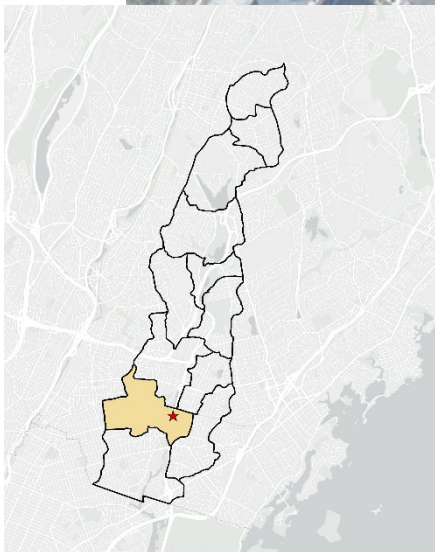
Environmental Score	Ability to Address Score	Ancillary Benefits Score	Total Score
14	15	17	46



HUTCHINSON RIVER WATERSHED MANAGEMENT PLAN

Reforestation Opportunity: Beechwood Ave Grassy Curb

ID: ReFst_28
Subwatershed: Vernon Park



Reforestation Opportunity Project Description
 October 2023

Latitude, Longitude	40.9094, -73.8146
Reforestation Type	Conservation Landscaping
Ownership	Public
Existing Land Use	Open Space
Existing Vegetation	Lawn and Trees along Trail
Low-Lying Areas	Yes: Flat Floodplain
Approximate Size of Reforestation Effort	Medium: 0.13 Acres
Invasive Presence and Species Type	Medium
Additional Opportunities on this Site	Yes
Project Visibility	Low: on a residential street
Challenges for Implementation	Medium: Pavement interference, potential utilities
Approximate Cost	Low

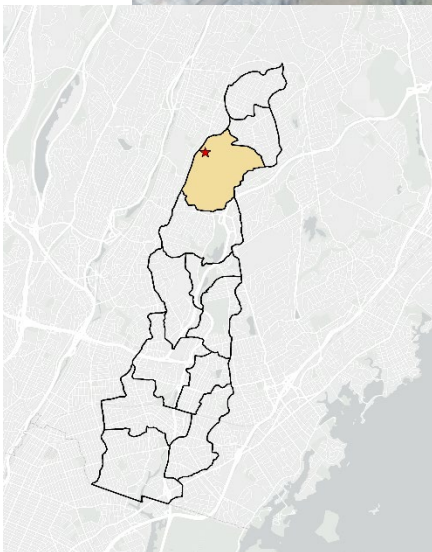
Environmental Score	Ability to Address Score	Ancillary Benefits Score	Total Score
25	19	17	61

HUTCHINSON RIVER WATERSHED MANAGEMENT PLAN

Reforestation Opportunity: Vernon Hills Shopping Center

ID: ReFst_03

Subwatershed: Lake Innisfree



Reforestation Opportunity Project Description
 October 2023

Latitude, Longitude	40.9697, -73.8044
Reforestation Type	Reforestation
Ownership	Private
Existing Land Use	Parking Lot
Existing Vegetation	Tree Islands and Edge Grassy Lawn
Low-Lying Areas	None
Approximate Size of Reforestation Effort	Large: 0.41 Acres
Invasive Presence and Species Type	Low
Additional Opportunities on this Site	Yes
Project Visibility	Medium: behind a large shopping center
Challenges for Implementation	Low: Pavement interference, potential utility lines, nearby structures
Approximate Cost	High

Environmental Score	Ability to Address Score	Ancillary Benefits Score	Total Score
25	13	15	53



HUTCHINSON RIVER WATERSHED MANAGEMENT PLAN

Reforestation Opportunity: Mt Vernon High School

ID: ReFst_09

Subwatershed: Pelham Lake



Reforestation Opportunity Project Description
 October 2023

Latitude, Longitude	40.9244, -73.8159
Reforestation Type	Conservation Landscaping
Ownership	Public
Existing Land Use	Open Space
Existing Vegetation	Grass Lawn
Low-Lying Areas	No: Water moves towards School Building
Approximate Size of Reforestation Effort	Large: 0.69 Acres
Invasive Presence and Species Type	Low
Additional Opportunities on this Site	Yes
Project Visibility	Low: on school property
Challenges for Implementation	High: Pavement interference, potential utilities, lighting interference
Approximate Cost	Medium

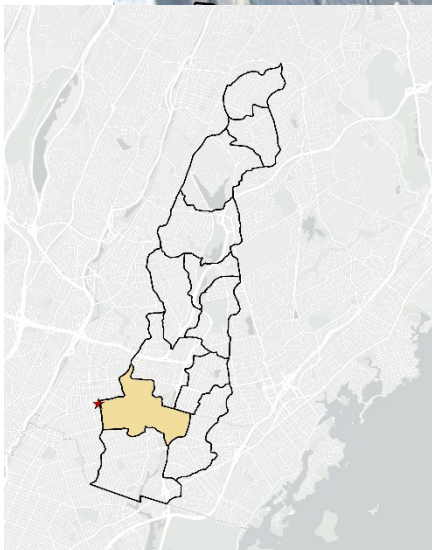
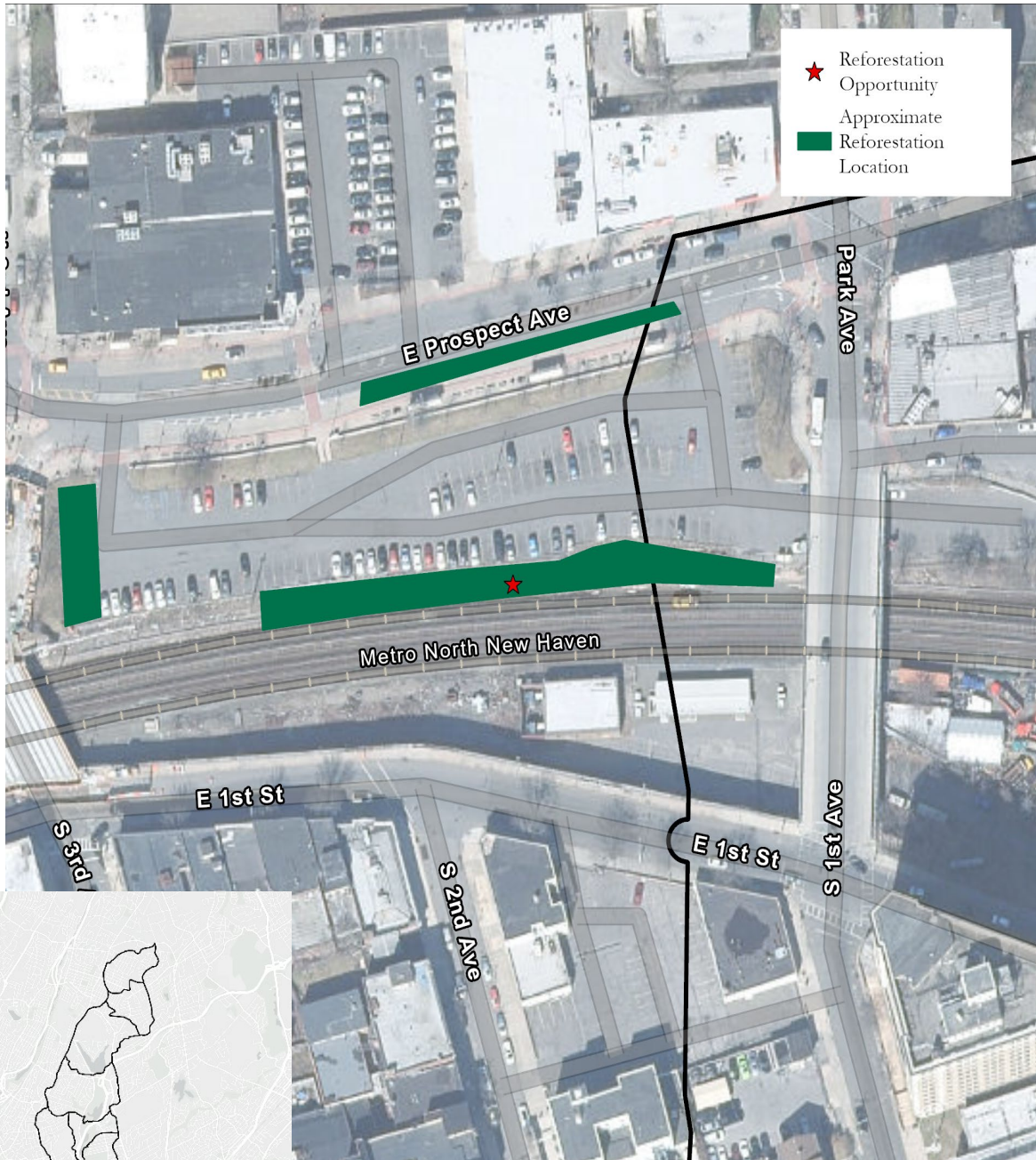
Environmental Score	Ability to Address Score	Ancillary Benefits Score	Total Score
22	17	10	49

HUTCHINSON RIVER WATERSHED MANAGEMENT PLAN

Reforestation Opportunity: Mt Vernon East Train Station

ID: ReFst_16

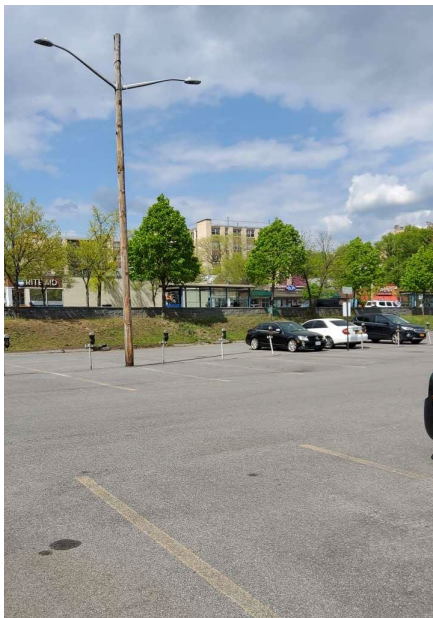
Subwatershed: Vernon Park



Reforestation Opportunity Project Description
 October 2023

Latitude, Longitude	40.9123, -73.8349
Reforestation Type	Conservation Landscaping
Ownership	Private
Existing Land Use	Sidewalk
Existing Vegetation	None
Low-Lying Areas	Yes
Approximate Size of Reforestation Effort	Large: 0.35 Acres
Invasive Presence and Species Type	Not Applicable
Additional Opportunities on this Site	Yes
Project Visibility	High: at a large train station
Challenges for Implementation	Medium: Pavement interference, functional change
Approximate Cost	Medium

Environmental Score	Ability to Address Score	Ancillary Benefits Score	Total Score
22	8	17	47



HUTCHINSON RIVER WATERSHED MANAGEMENT PLAN

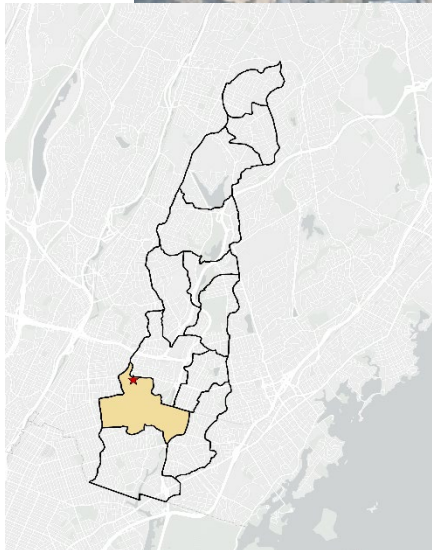
Reforestation Opportunity: Holmes Elementary School

ID: ReFst_17

Subwatershed: Vernon Park



- ★ Reforestation Opportunity
- Approximate Reforestation Location



Reforestation Opportunity Project Description
 October 2023

Latitude, Longitude	40.9173, -73.8248
Reforestation Type	Conservation Landscaping
Ownership	Public
Existing Land Use	Open Space
Existing Vegetation	Grass Lawn and Ornamental Trees
Low-Lying Areas	None
Approximate Size of Reforestation Effort	Large: 0.36 Acres
Invasive Presence and Species Type	Not Applicable
Additional Opportunities on this Site	Yes
Project Visibility	Low: on school property
Challenges for Implementation	High: Functional change
Approximate Cost	Medium

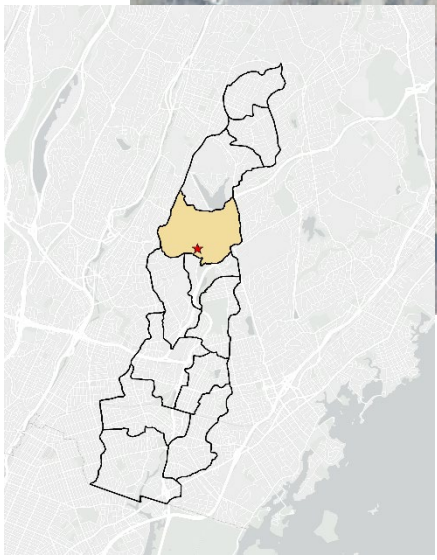
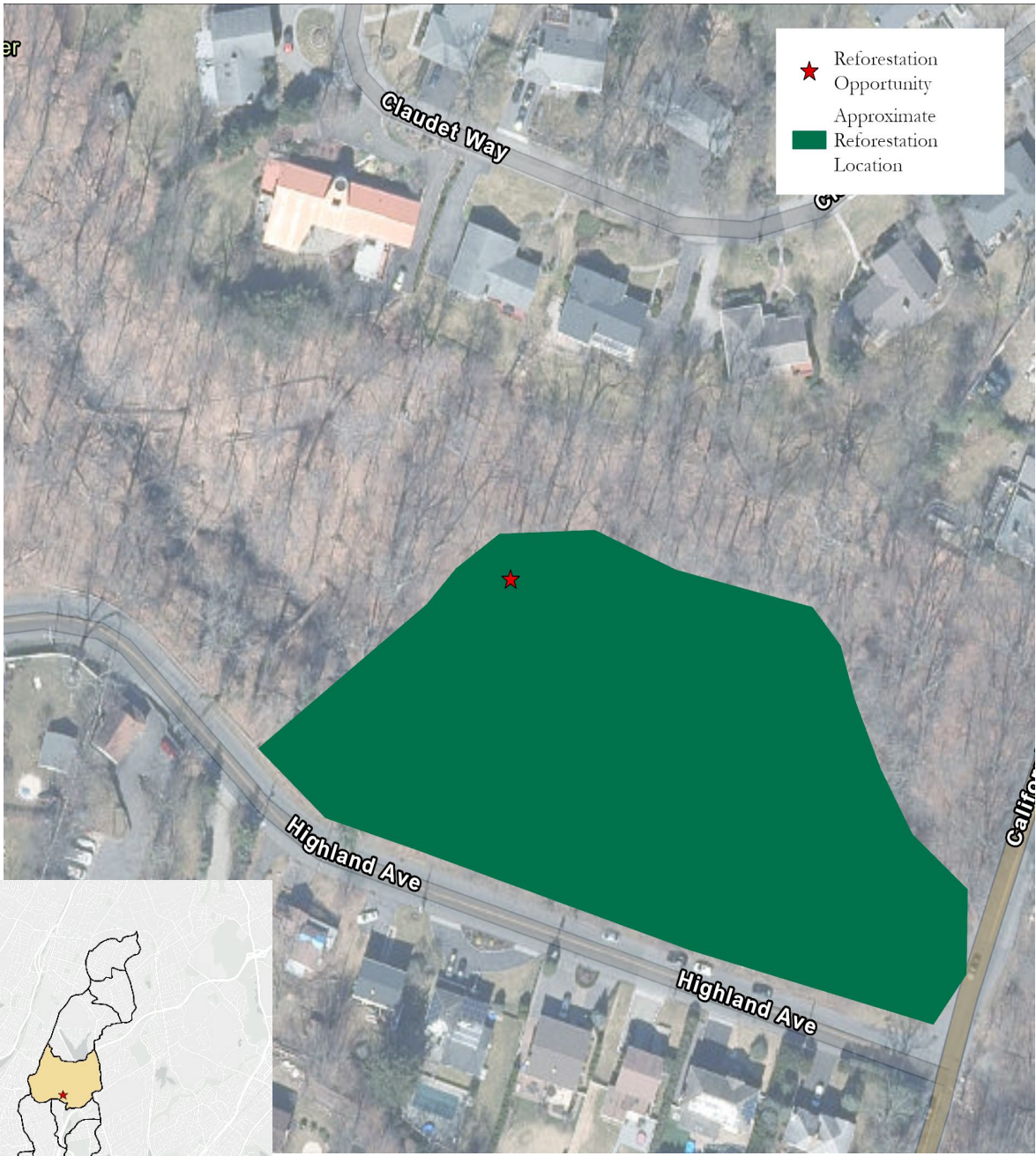
Environmental Score	Ability to Address Score	Ancillary Benefits Score	Total Score
22	17	10	49

HUTCHINSON RIVER WATERSHED MANAGEMENT PLAN

Reforestation Opportunity: Eastchester Park

ID: ReFst_08

Subwatershed: Reservoir Three



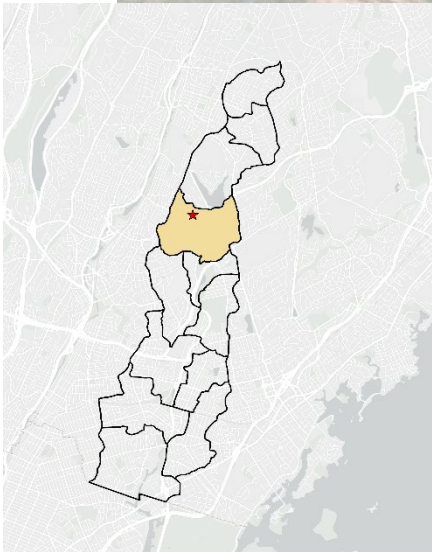
Reforestation Opportunity Project Description
 October 2023

Latitude, Longitude	40.9476, -73.8064
Reforestation Type	Conservation Landscaping
Ownership	Public
Existing Land Use	Forest
Existing Vegetation	Overgrown Wetland
Low-Lying Areas	Yes
Approximate Size of Reforestation Effort	Large: 2.51 Acres
Invasive Presence and Species Type	High
Additional Opportunities on this Site	No
Project Visibility	Medium: in a community park
Challenges for Implementation	Medium: Pavement interference, potential utility lines, nearby structures
Approximate Cost	High

Environmental Score	Ability to Address Score	Ancillary Benefits Score	Total Score
27	7	10	44



HUTCHINSON RIVER WATERSHED MANAGEMENT PLAN
Reforestation Opportunity: Anne Hutchinson Elementary School
ID: ReFst_06
Subwatershed: Reservoir Three



Reforestation Opportunity Project Description
 October 2023

Latitude, Longitude	40.9549, -73.8074
Reforestation Type	Conservation Landscaping
Ownership	Public
Existing Land Use	Open Space
Existing Vegetation	Grass Lawn
Low-Lying Areas	None
Approximate Size of Reforestation Effort	Large: 0.7 Acres
Invasive Presence and Species Type	Low
Additional Opportunities on this Site	Yes
Project Visibility	Medium: At a public park
Challenges for Implementation	Medium: Potential utilities
Approximate Cost	Medium

Environmental Score	Ability to Address Score	Ancillary Benefits Score	Total Score
22	17	15	54