

# SAVE OSWEGATCHIE HILLS



The Oswegatchie Hills are a fragile coastal forest with a mile of pristine salt water frontage on the Niantic River. Development of this tidal estuary would destroy a critical part of the ecosystem that supports not only the River, but the Niantic Bay and Long Island Sound.

## HABITAT and RECREATION

Tucked between I-95 and the commercial and residential communities in East Lyme, CT, lies a secluded, fragile coastal forest. The rugged landscape of Oswegatchie Hills descends to a mile of salt water frontage on the Niantic River and provides a critical undisturbed habitat for a multitude of native plant and animal species, a safe haven for migrating birds, and an inspiring landscape for the state's residents to hike and explore.



## THREATENED

Two-thirds of the undeveloped coastal forest is protected in perpetuity by the Oswegatchie Hills Nature Preserve, established in 2007. The final one-third has been threatened by high-density development for over 20 years.

The developer is seeking to construct 840 units of housing with 1,767 parking spaces on the 236-acre site in the first of two areas he has delineated for possible development. The second phase sits on the waterfront portion.

## LAST MILE

The Oswegatchie Hills make up the last mile of undeveloped Niantic River saltwater shoreline. This last critical piece of land that abuts the existing 457-acre nature preserve includes vernal pools, wetlands, and steep hillsides with shallow depth-to-bedrock soils.

*Our goal is to see this land protected and preserved for future generations.*



Save  
the  
Sound®





# SAVE OSWEGATCHIE HILLS

## ONCE IT'S GONE, IT'S GONE FOREVER

### Proposed Phase I:

- 840 high-density apartment units
- 1,767 parking spaces
- 36 acres of impervious surfaces

### JOIN OUR COALITION

The Save Oswegatchie Hills Coalition includes organizations and individuals from across the state. We believe the best use of the remaining 236 acres of this vulnerable coastal forest is preservation, not high density development.

**This land should be acquired at fair market value and added to the adjoining Oswegatchie Hills Nature Preserve.**

### Founding Members

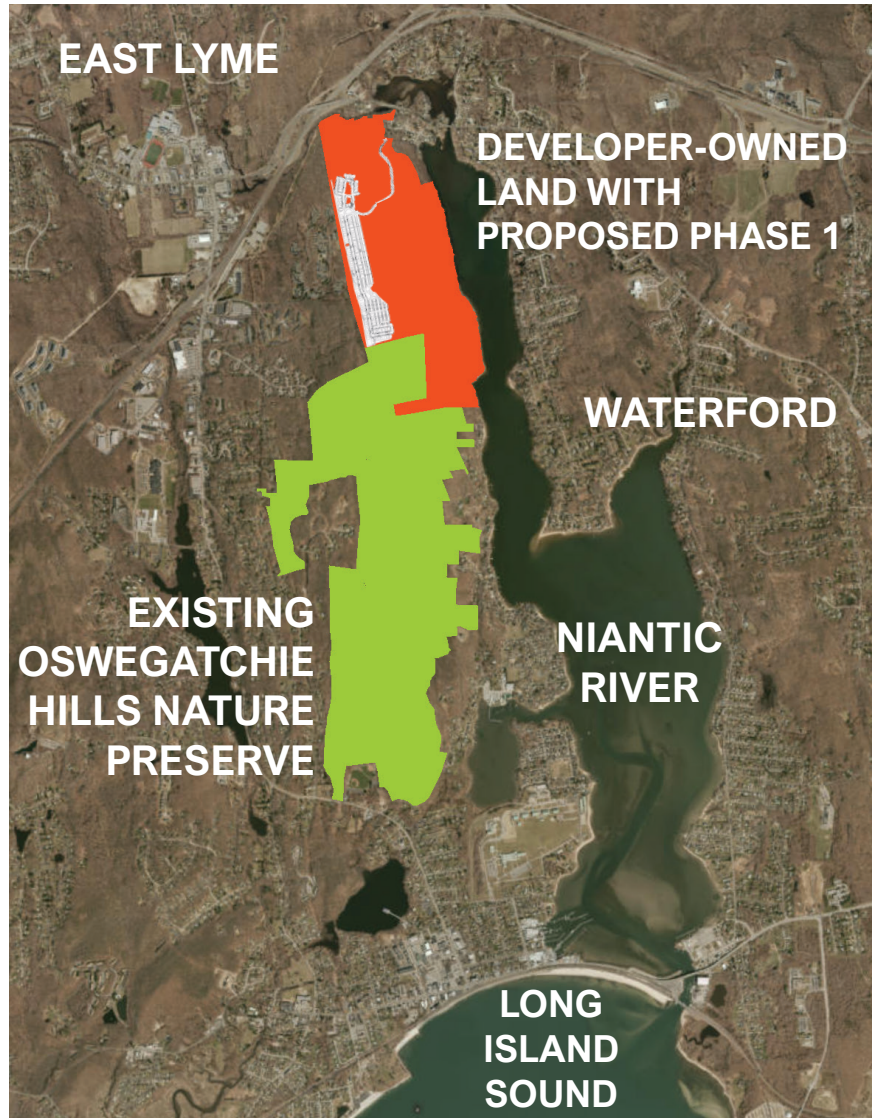
Save the Sound  
Friends of Oswegatchie Hills Nature Preserve  
Save the River-Save the Hills

### Statewide Organizations

CT Forest and Park Association  
CT Land Conservation Council  
Rivers Alliance of Connecticut  
Sierra Club Connecticut

### Our Neighbors

CT Citizens Against Overdevelopment  
Denison Pequotsepos Nature Center  
Eightmile River Wild & Scenic Committee  
Friends of Pachaug Forest  
Groton Open Space Association  
Hamden Land Conservation Trust  
Lyme Land Conservation Trust  
Middlesex Land Trust  
Old Lyme Land Trust  
Old Saybrook Land Trust  
Tributary Mill Conservancy  
Plus hundreds of individual supporters



### Organizations in the Niantic River Watershed

Brookside Farm Museum  
East Lyme Land Trust  
East Lyme Harbor Management/Shellfish Commission  
East Lyme Historical Properties Commission  
East Lyme Historical Society  
Niantic Children's Museum  
Pollinator Pathway East Lyme  
Samuel Smith Farmstead  
Waterford Historical Properties Commission  
Waterford Land Trust

**JOIN THE SAVE OSWEGATCHIE HILLS COALITION TODAY!**

**TO JOIN and for  
MORE INFO**

Suzanne Thompson  
[oswegatchie@savethesound.org](mailto:oswegatchie@savethesound.org)  
860-662-1531

[www.oswhills.org](http://www.oswhills.org)  
[www.savetheriversavethehills.org](http://www.savetheriversavethehills.org)  
[www.savethesound.org/oswegatchie](http://www.savethesound.org/oswegatchie)