

SAVE OSWEGATCHIE HILLS



The Oswegatchie Hills are a fragile coastal forest with a mile of pristine salt water frontage on the Niantic River. Development of this tidal estuary would destroy a critical part of the ecosystem that supports not only the River, but the Niantic Bay and Long Island Sound.

HABITAT and RECREATION

Tucked between I-95 and the commercial and residential communities in East Lyme, CT, lies a secluded, fragile coastal forest. The rugged landscape of Oswegatchie Hills descends to a mile of salt water frontage on the Niantic River and provides a critical undisturbed habitat for a multitude of native plant and animal species, a safe haven for migrating birds and an inspiring landscape for the state's residents to hike and explore.



THREATENED

Two-thirds of the undeveloped coastal forest is protected in perpetuity by the Oswegatchie Hills Nature Preserve established in 2007. The final one-third has been threatened by high-density development for over 20 years.

The developer is seeking to construct 840 units of housing with 1,767 parking spaces on the 236-acre site in the first of two areas he has delineated for possible development. The second phase sits on the waterfront portion.

LAST MILE

The Oswegatchie Hills make up the last mile of undeveloped Niantic River saltwater shoreline. This last critical piece of land that abuts the existing 457-acre nature preserve includes vernal pools, wetlands, and steep hillsides with shallow depth-to-bedrock soils.

Our goal is to see this land protected and preserved for future generations.



SAVE OSWEGATCHIE HILLS

ONCE IT'S GONE, IT'S GONE FOREVER

Proposed Phase I:

- 840 high-density apartment units
- 1,767 parking spaces
- 36 acres of impervious surfaces

JOIN OUR COALITION

The Save Oswegatchie Hills Coalition includes organizations and individuals from across the state. We believe the best use of the remaining 236 acres of this vulnerable coastal forest is preservation, not high density development.

This land should be acquired at fair market value and added to the adjoining Oswegatchie Hills Nature Preserve.

Founding Members

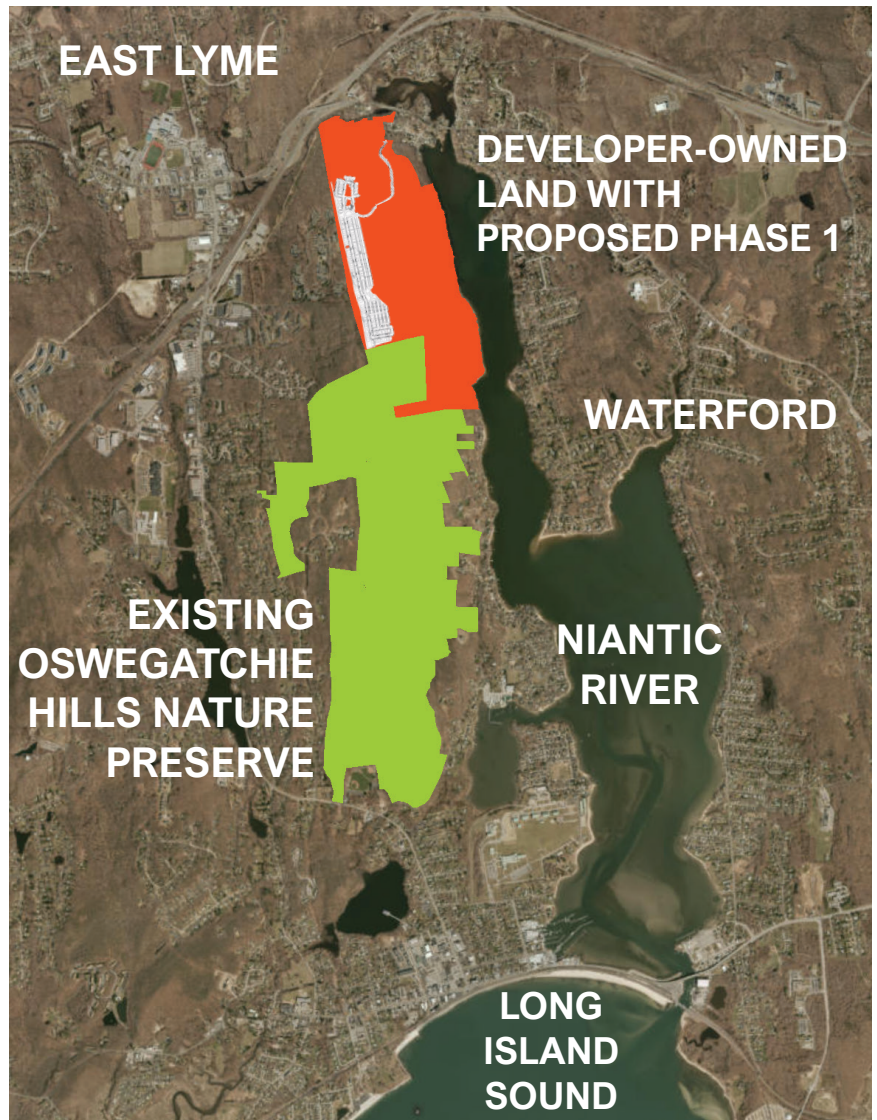
Save the Sound
Friends of Oswegatchie Hills Nature Preserve
Save the River-Save the Hills

Statewide Organizations

CT Forest and Park Association
CT Land Conservation Council
Rivers Alliance of Connecticut
Sierra Club Connecticut

Our Neighbors

CT Citizens Against Overdevelopment
Denison Pequotsepos Nature Center Eightmile
River Wild & Scenic Committee
Friends of Pachaug Forest
Groton Open Space Association
Hamden Land Conservation Trust
Lyme Land Conservation Trust
Middlesex Land Trust
Old Lyme Land Trust
Old Saybrook Land Trust
Tributary Mill Conservancy
Plus hundreds of individual supporters



Organizations in the Niantic River Watershed

Brookside Farm Museum
East Lyme Land Trust
East Lyme Harbor Management/Shellfish Commission
East Lyme Historical Properties Commission
East Lyme Historical Society
Niantic Children's Museum
Pollinator Pathway East Lyme
Samuel Smith Farmstead
Waterford Historical Properties Commission
Waterford Land Trust

JOIN THE SAVE OSWEGATCHIE HILLS COALITION TODAY!

**TO JOIN and for
MORE INFO**

Suzanne Thompson
oswegatchie@savethesound.org
860-662-1531

www.oswhills.org
www.savetheriversavethehills.org
www.savethesound.org/oswegatchie